

# Newsletter

## Redfield Edge Primary School

*'Striving to be the best version of ourselves.'*

SATs don't measure sports, SATs don't measure art,  
SATs don't measure music, or the kindness in your heart.  
SATs don't see your beauty, SATs don't know your worth,  
SATs don't see the reasons you were put upon this earth.  
SATs don't see your magic, how you make others smile,  
SATs don't time how quickly you can run a mile.  
SATs don't hear your laughter, or see you've come this far,  
SATs are just a tiny glimpse of who you really are.  
So sitting at your table, with a pencil and your test,  
Remember SATs aren't who you are, remember you're the best.

### Learning in Hazel Class

Hazel Class have been growing beans to support their learning of 'How does your Garden Grow?'



The children have been excited to observe the beans grow taller and measure them throughout this term. They have been recording this in a bean diary to track their own beans.



### Gardening Volunteers

With Mrs Sheppard leaving us at the end of this academic year, we are looking to develop a parent group of volunteers who are interested in helping us out in the school garden.

This will include giving up a little bit of time each term to help tend to the garden and, with the help of pupils, weed and plant our produce.

You do not need to be a gardening expert, we are just looking for people who are enthusiastic, love the outdoors and working alongside children and have a little spare time on their hands.

If you are at all interested, please email in and let us know.

Thank you ☺☺☺

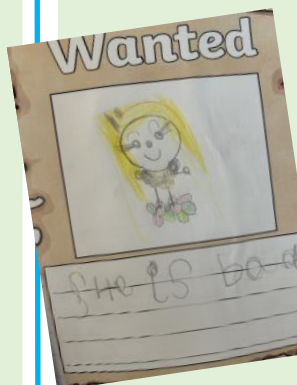


**Year 3 mini production**  
**Thursday 5<sup>th</sup> June**

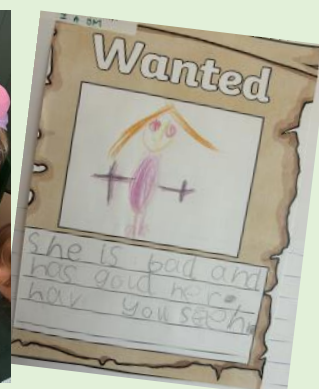


### Learning in Holly Class

In Holly Class, the children had a very exciting mystery to solve! Their classroom was turned into a *crime scene* after discovering that someone had been sneaking around and causing mischief... After examining the clues, the children became brilliant detectives and quickly realised the culprit was none other than *Goldilocks*!



To help the Three Bears, who even sent us a special letter, the children created their very own Wanted Posters to try and track her down. The children loved using their imaginations and practicing their mark-making skills to describe Goldilocks. In addition to their detective work, they also got creative with clay, designing and making special bowls and spoons for Baby Bear – he was very grateful!





## Learning in Beech Class

This week, Beech Class explored the question *"What is the best way for a Jew to show commitment to God?"* through an exciting "Passport Hunt" experience. The children visited five interactive stations that brought aspects of Jewish faith to life, including observing Shabbat, keeping kosher, celebrating Bar and Bat Mitzvahs, wearing traditional clothing like the kippah and tallit, and learning about the importance of daily prayer through the Shema.



At each station, they completed thoughtful activities such as sorting kosher foods, tracing Hebrew letters, and writing about their own values, collecting themed passport stamps along the way. The class showed great respect, curiosity, and reflection as they deepened their understanding of how commitment to faith can be shown in different ways.



## The School Office

From **Monday**, we are going to be making a few changes in the school office due to the change of staffing capacity and increase in demand on staff.

- The office will be open to parents from **8.45am – 10.15am (face to face)** to deal with any questions / issues you may have.
- From **10.15** all communications to the office will be via phone message and email.
- Phone messages and emails will be checked throughout the day by staff and acted upon.
- If children are leaving school within the school day for an appointment, this must be **communicated in advance** with the time and reason to enable staff to prepare children to be ready for collection.
- The school office will be **completely closed** during lunch at 12.15pm – 1.15pm.

## Learning in Pine Class

In Computing, Pine Class have been collecting, inputting and using data. After observing and recording the minibeast in our playground, we made bar charts.



This gave us the opportunity to make links to our learning in Maths to interpret the data and answer questions.

Minibeast	Tally	Number
ant		4
beetle		4
fly		4
grasshopper		4
millipede		4
snail		4
spider		4



**Save the date!**

**Sports Day**

**WEDNESDAY 2<sup>nd</sup> JULY**



## Learning in Willow Class

Willow Class have been learning scientifically this week. The children conducted an experiment to understand the process of water transportation in plants.

The children will continue to monitor the changes over the coming days. ☺



In addition, the children have been enriching their knowledge about all things plants!



## (more) Learning in Holly Class!

This week in Holly Class, the children have had a wonderful time exploring the classic tale of *The Gingerbread Man*! The children have been busy retelling the story through some fantastic early writing – the adults are so proud of their hard work and creativity.



Run Run as fast  
as you can you can  
catch me I'm a  
man.  
He is sweet and fast  
He is funny and yummy.



To bring the story to life, Holly Class made their very own gingerbread men! The classroom was filled with the delicious smell of baking, and of course, they tasted every bit as yummy as they looked. Along the way, the children learned about capacity and measurement, followed simple instructions, and practised their basic cooking skills. What a fun (and tasty!) way to learn!



## Attendance

Current whole school attendance  
**95.7%**

Holly	95.5%
Hazel	95.2%
Pine	94.8%
Willow	96%
Beech	95.7%
Maple	96.2%
Oak	<b>96.6%</b>

Well done Oak Class – fantastic attendance so far this year 😊

## Learning in Maple class

This week, Maple class have been learning about conservation. The children have explored the impact of deforestation in the world's rainforests and contributing factors such as palm oil production and space for farmland.



Year 5 have used this knowledge in their English non-fiction unit as they prepare to write an explanation piece on how conservation works.

In addition, the children were practising their Mini production, which they performed to parents on Thursday.

A busy week for Maple Class! 😊

## Pack your child a HEALTHY LUNCH BOX

Choose a variety of foods from each food group

Fruit



+

Vegetables



+

Dairy



+

Wholegrains



+

Lean meat  
& alternatives



=

A Healthy Lunch Box



MAKE WATER  
YOUR DRINK

PACK ICE BRICKS  
TO KEEP FOOD  
COOL

USE A THERMOS  
TO KEEP FOOD  
WARM

NSW Health

Toast is available from the kitchen for a break time snack (12p per day) and fruit is available in KS1. We expect all other children to bring a **healthy** snack for break.



# We're using Arbor's free Parent Portal and Parent App

## We've chosen Arbor to help us manage our school.

Arbor is a simple, smart and cloud-based MIS (Management Information System), which helps us work faster, smarter and more collaboratively as a school. The Parent App and Parent Portal mean we can keep you informed about your child's life at school in a much more accessible way. Log into Arbor to see and update your child's information, get live updates and make payments or bookings on the go!

The Parent Portal works on Google Chrome (computer or laptop) and you can download the Parent App from the App Store or Google Play Store on your phone (Android 5.0; iOS 10.0 and upwards).

## How to get started

1. Wait for your welcome email from us telling you Arbor is ready - you won't be able to log in before
2. Click the link in your welcome email to set up your password
3. Go to the App or Google Play Store on your phone and search 'Arbor'
4. Click 'Install' on Android or 'Get' on iPhone then open the App
5. Enter your email, select the school, then enter your password
6. Accept the Terms & Conditions and enter your child's birthday

The Sunnyville School of Magic  
W10 5BN, London, GBR

Enter your password

Log In

Forgotten password?

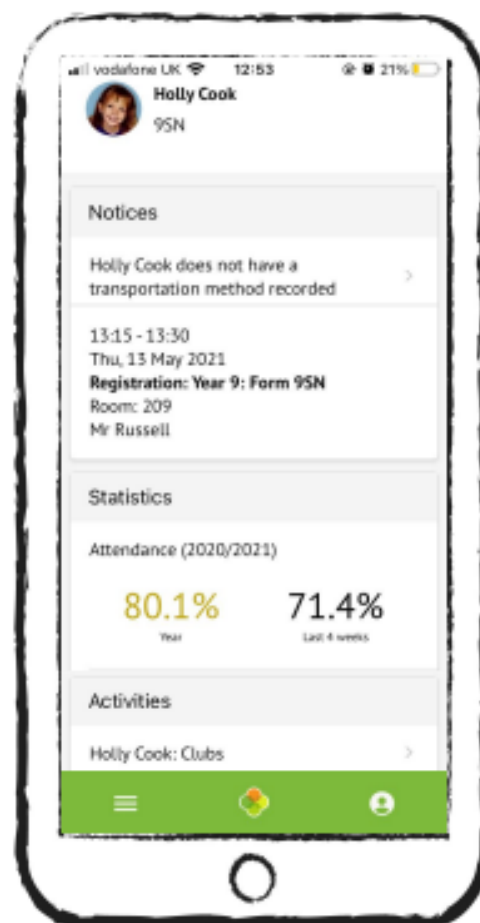
## Need help using Arbor?

**Contact the school office if you have questions about Arbor, the App or Parent Portal.** Tell us the type and model of your phone, e.g. an iPhone SE, and include screenshots or screen recordings.

To safeguard student data in line with General Data Protection Regulations (GDPR), Arbor only works directly with schools.

### Some tips to try:

1. Ensure your username is the email address you use for Arbor. Ask us to **check the email address** linked to your account.
2. **Reset your password** from the login page, or ask us to do this.
3. If the login email was sent to you more than 96 hours ago, the **password link will have expired**. Ask us to send it again.
4. Ask the school office to check that your email address has not been used twice - e.g. on another guardian or child's profile.
5. **Enter the birthday** of one of your children to log in.
6. Only relatives who are **Primary Guardians** of a child can access the Arbor App. Ask us to check you can access Arbor.





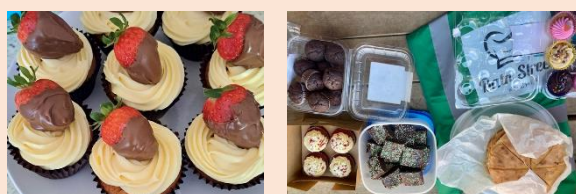
## Cake Sale for Bath Street Kitchen

*A charity listening to and feeding those on the streets of Bath, many of whom are homeless.*

Thank you so much for all of your support with our extra special cake sale this week.

**Evelyn and Rowan raised £160.35!**

What great young citizens they are 😊😊😊



Everyone was incredibly generous with their cake donations as well as their support of the sale. 😊

## End of KS2 SATs celebrations!

Year 6 parents wanted to give their children a little bit of joy after a very challenging and busy week of SATs.



The children let their hair down with a water fight in the sunshine and thoroughly enjoyed themselves following a week of hard work and focus.

**Well done year 6, we are all so proud of you!**

Now we turn our attention to gathering writing evidence for moderation and starting your upcoming performance of Peter Pan, which I know, has already caused lots of excitement in the class! 😊

## Learning in Year 6

After a busy week of assessments, Year 6 have been spending the afternoons doing the things they love!



## Dates for the Diary

Monday 19 <sup>th</sup> May	Year 3 Nature explorers	Willow class <b>Group A</b> will spend the afternoon in the outdoors with Mrs Stone and Mrs Bailey exploring nature and getting crafty!
Tuesday 20 <sup>th</sup> May	Year 3 Nature explorers	Willow class <b>Group B</b> will spend the afternoon in the outdoors with Mrs Stone and Mrs Bailey exploring nature and getting crafty!
Thursday 22 <sup>nd</sup> May	PCSO visiting Year 6	Oak Class will take part in a workshop session with our local PCSO. The focus is 'Crime and Consequence'. In addition, the children will learn about how to be safe in and around our community.
	Year 2 Class assembly	Children from Pine Class will be sharing their learning from the term – parents welcome to attend.
	Year 3 cake sale	Delicious treats will be available for parents to buy at the end of the day – money raised will go to Willow class.

Friday 23 <sup>rd</sup> May	Last day of Term 5	We break today for a half term break.
Monday 2 <sup>nd</sup> June	INSET DAY	Training Day for staff – <b>school is closed.</b>
Tuesday 3 <sup>rd</sup> June	First day of Term 6	Welcome back to a new term. 😊
Thursday 5 <sup>th</sup> June	Multiplication Checker – Year 4	Over the week, children in Year 4 will take part in these statutory assessments. This is a national assessment, which all Year 4 children in the country will be part of. It test timetables knowledge. Results will be published and reported to parents at the end of the summer term.
	Year 3 mini production	Willow Class will perform to their family and friends. 2.50pm
Friday 6 <sup>th</sup> June	Friends annual Fun RUN	All children will be invited to participate in the fun run to raise money for the school.
Monday 9 <sup>th</sup> June	Year1 Phonic screening begins	The children in Hazel Class will take part in the statutory Phonic screening test. This is a national assessment with results published at the end of the summer. The assessments take place over a two-week period.
	Cricket Dynamos	Details of this event to follow
	Year 4 Nature explorers	Beech class <b>Group A</b> will spend the afternoon in the outdoors with Mrs Stone and Mrs Bailey exploring nature and getting crafty!