

# 6

## STATISTICS

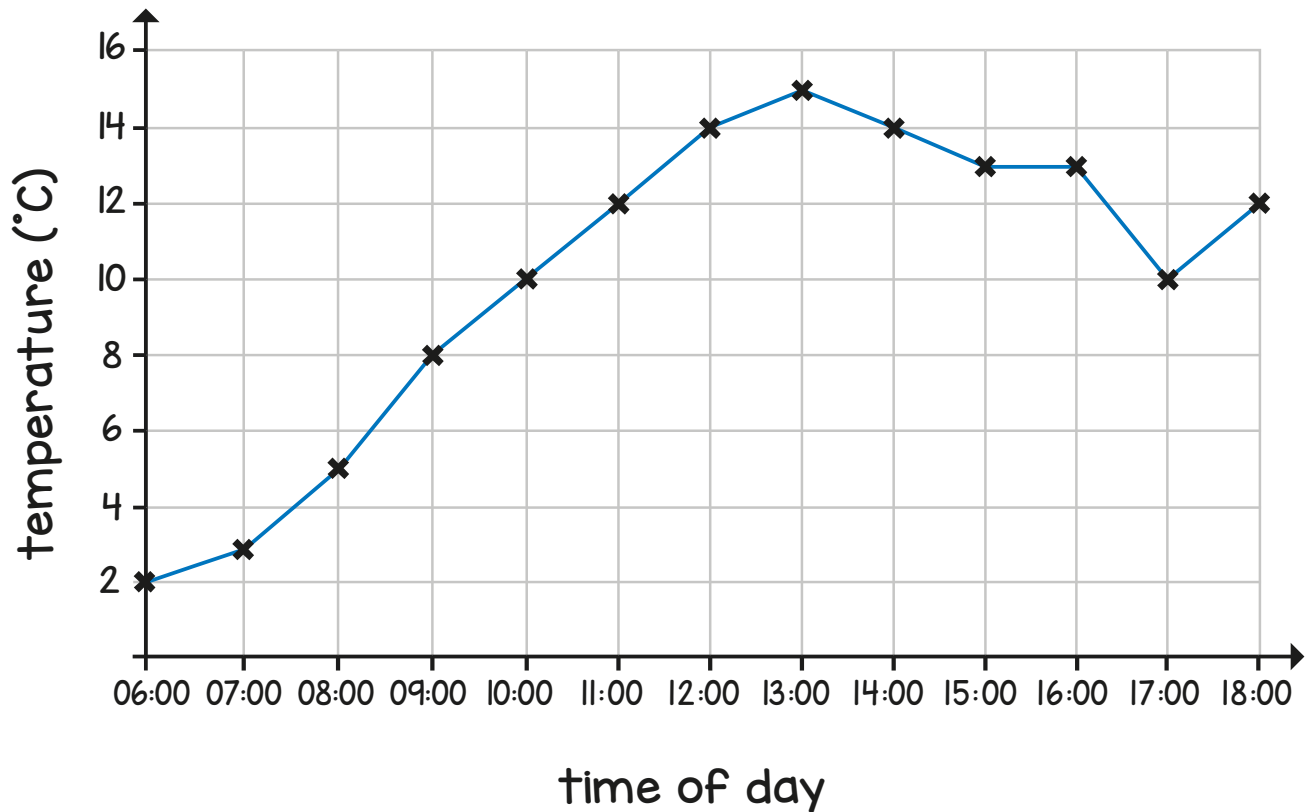
White  
Rose  
Maths



From White Rose Maths schemes for Year 6 Summer Term  
**BLOCK 2 - STATISTICS**



The line graph shows the temperature each hour on one day in London.



At what time was the temperature 5°C?

\_\_\_\_\_

How many degrees warmer was it at 2 pm than at 7 am?

°C

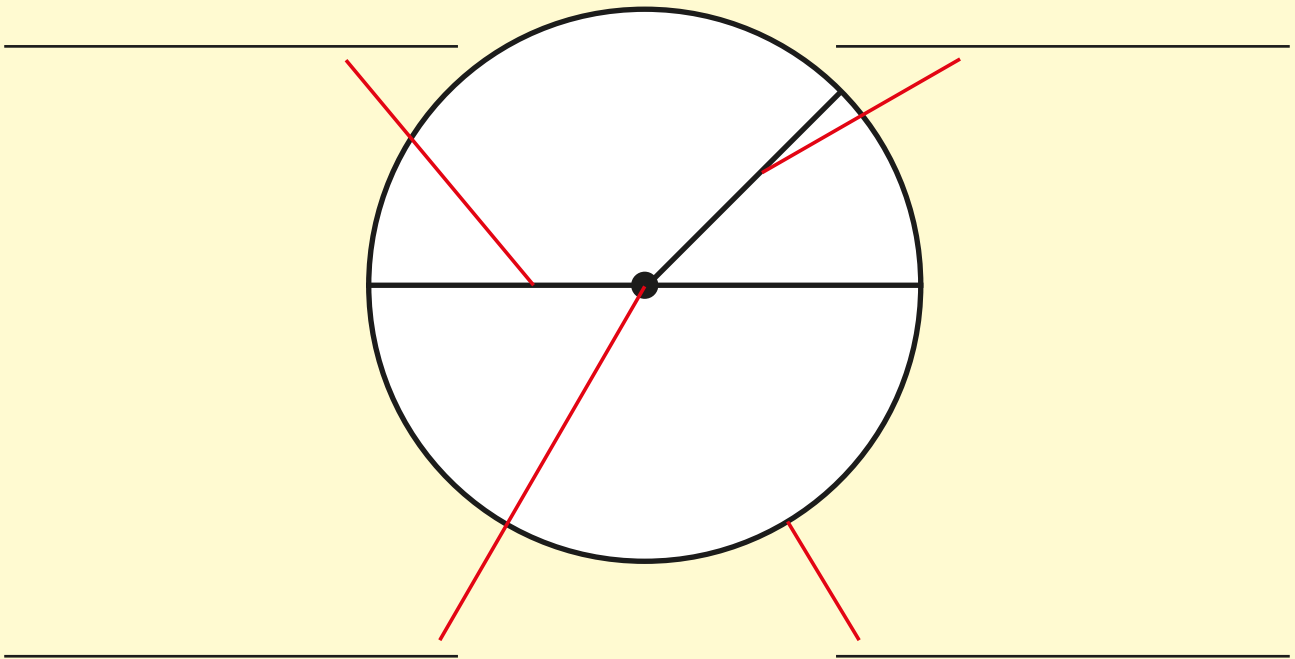
- 2 Use the word bank to label the parts of the circle.

centre

circumference

diameter

radius



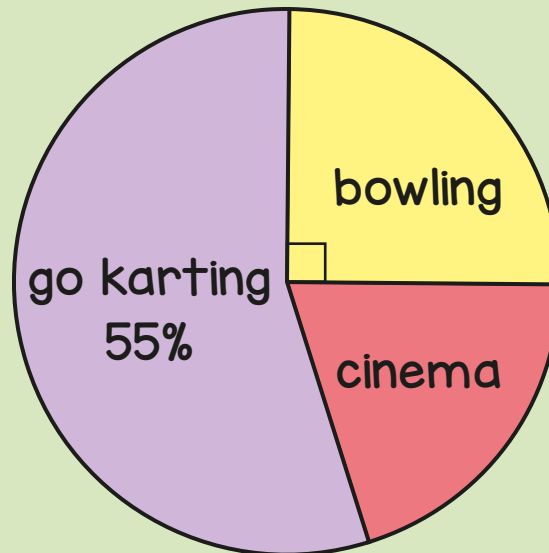
- 3 A 2 pence coin has a diameter of 32 mm.  
What is the radius of a 2 pence coin?



4

40 children were asked where they would like to go for the afternoon.

The pie chart shows the results.



What percentage of children chose bowling?

 %

What percentage of children chose the cinema?

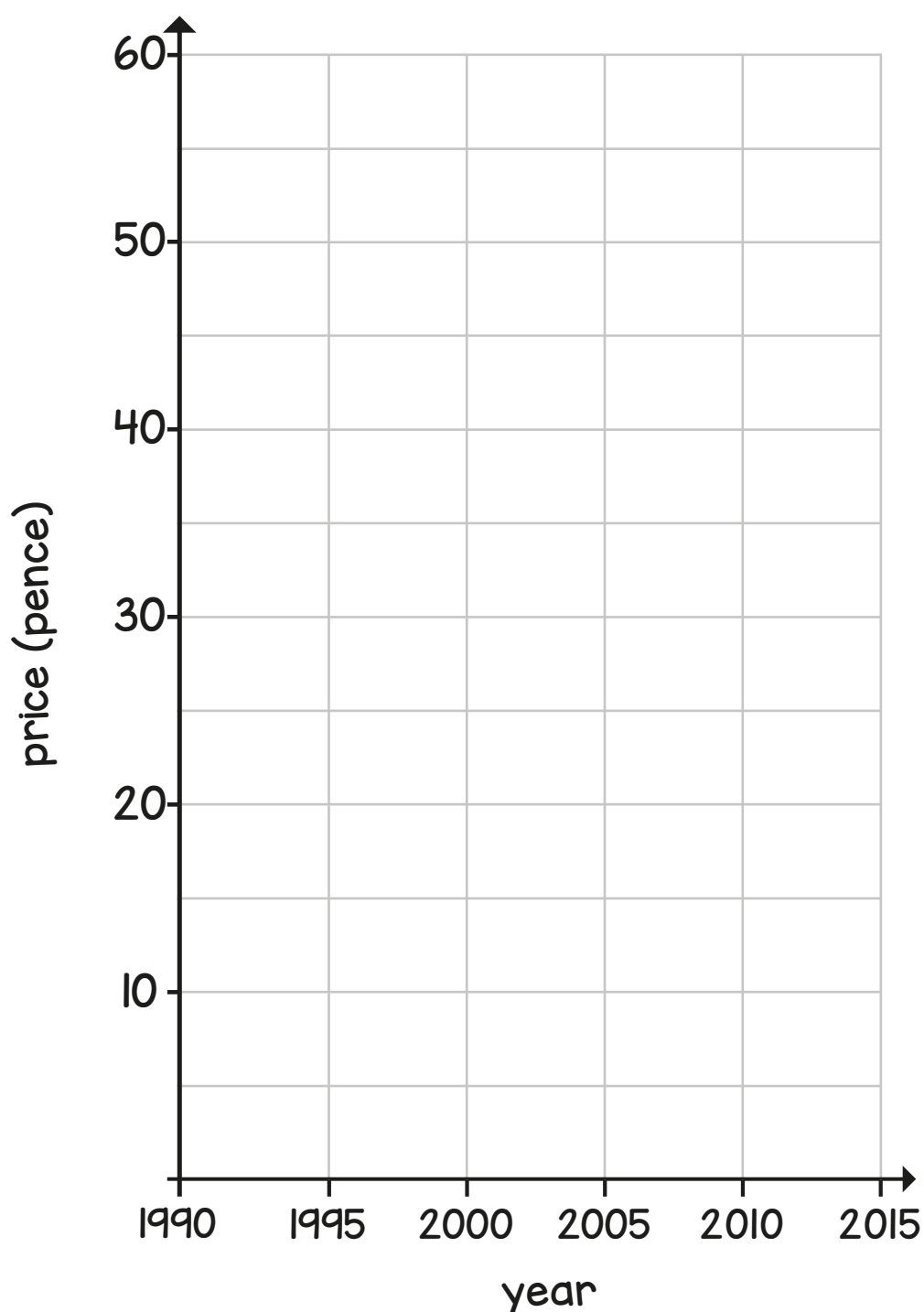
How many children want to do go karting?

5

The table shows the change of the price of a bar of chocolate since 1990

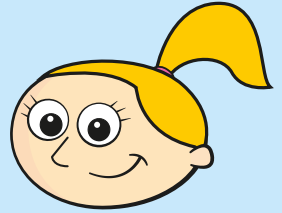
Year	1990	1995	2000	2005	2010	2015
Price (pence)	10	15	25	45	50	60

Draw a line graph to show the data.



6

Eva records how many glasses of water she drinks each day.



Mon	Tues	Wed	Thurs	Fri	Sat	Sun
7	10	11	9	10	8	8

What is the mean number of glasses she drinks in one day?

The following week, the mean number of glasses is 10  
How many more glasses of water did she drink in the following week?

7

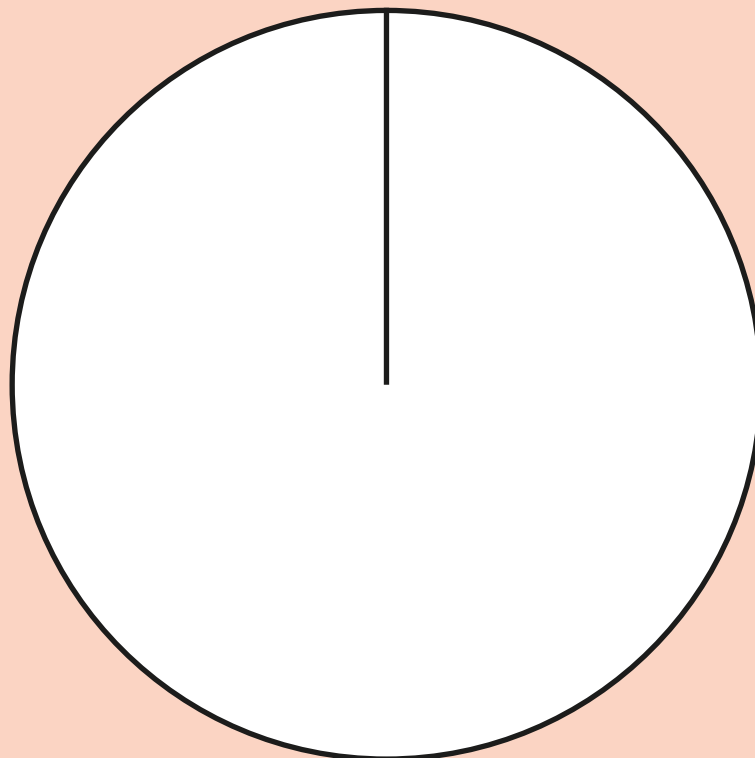
60 people were asked to choose their favourite pizza topping.



Complete the table.

Topping	Number of people	Degrees
vegetable	9	54
cheese	26	
chicken	15	90
other	10	60
<b>Total</b>	<b>60</b>	

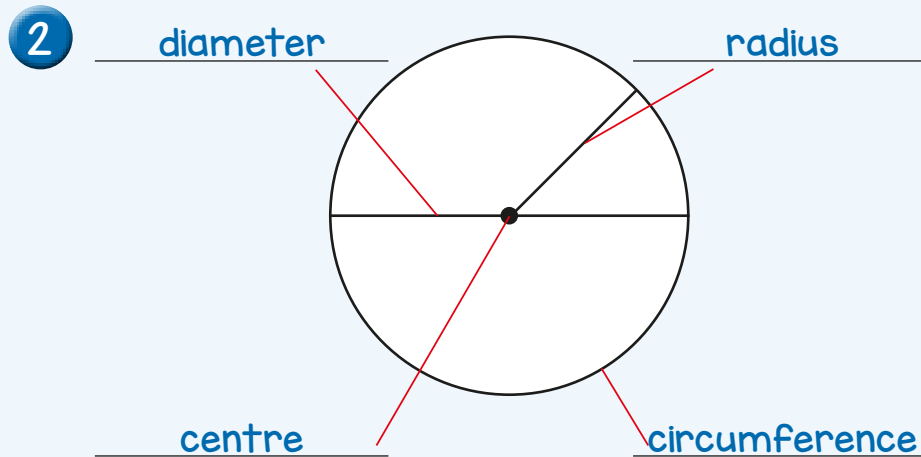
Show the results in the pie chart.



# Answers



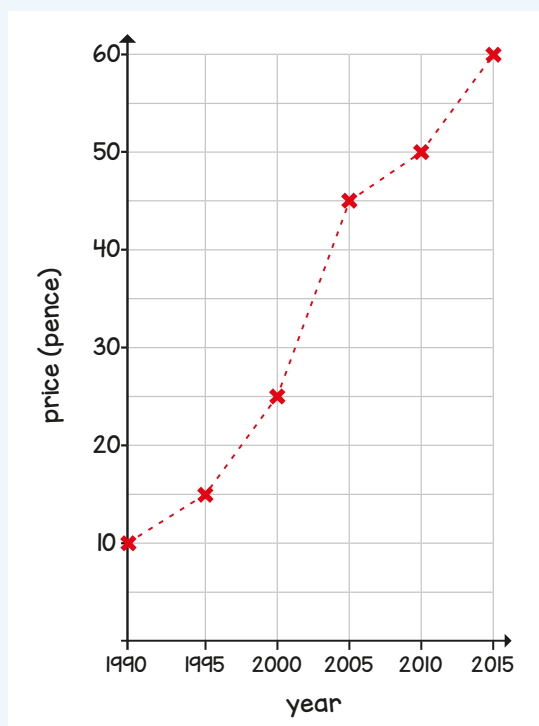
1 08:00  
11°C



3 16 mm

4 25%  
20%  
22 children

5 Points correctly plotted and use of a ruler.





- 6 9 glasses  
7 more glasses

7

Topping	Number of people	Degrees
vegetable	9	54
cheese	26	156
chicken	15	90
other	10	60
<b>Total</b>	<b>60</b>	<b>360</b>

