

6

RATIO

White
Rose
Maths



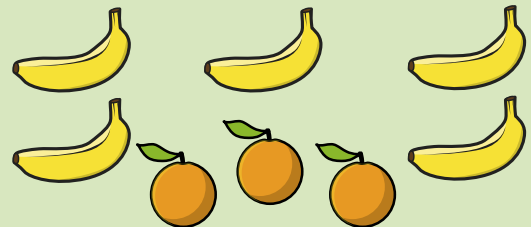
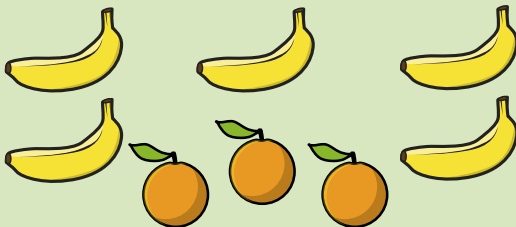
From White Rose Maths schemes for Year 6 Spring Term
BLOCK 6 - RATIO

1

Complete the sentences.

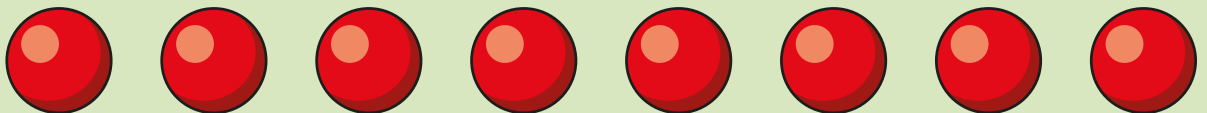


For every 1 apple, there are pears.



For every 3 oranges, there are bananas.

2



Complete the sentence.

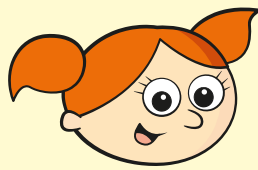
For every 1 cone, there are spheres.

3

Alex has these coins.



Jack has these coins.



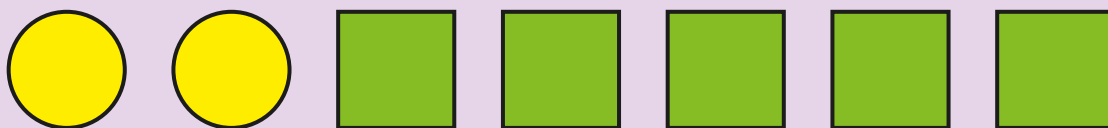
For every 4 coins I
have got, Jack has got
6 coins.

Is Alex correct? _____

Explain your answer.

A large, empty rectangular box with a blue border, intended for the student to write their explanation.

4



The ratio of circles to squares is

 : 

Complete the sentence in two different ways.

The ratio of rectangles to triangles is

 :

The ratio of rectangles to triangles is

 :

5

Circle the equivalent ratios.

4 : 6

6 : 4

2 : 3

1 : 3

6 : 9

6

Part of a bar is shaded.



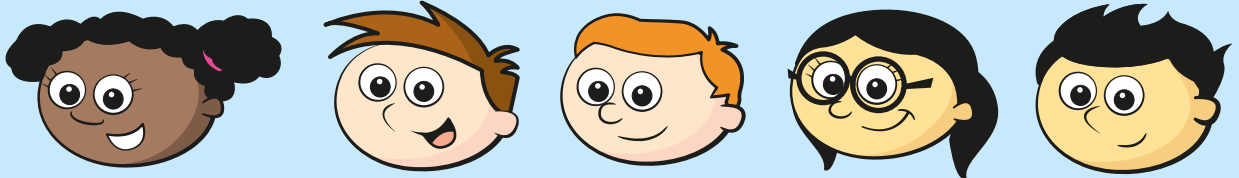
What fraction of the bar is shaded?



What is the ratio of shaded parts to non-shaded parts? _____

7

For every 3 boys in a class, there are 2 girls.



There are 30 children in the class.


How many girls are there?

8

The ratio of red to blue cubes in a tower is 1 : 6

There are 9 red cubes in the tower.

How many blue cubes are there in the tower?



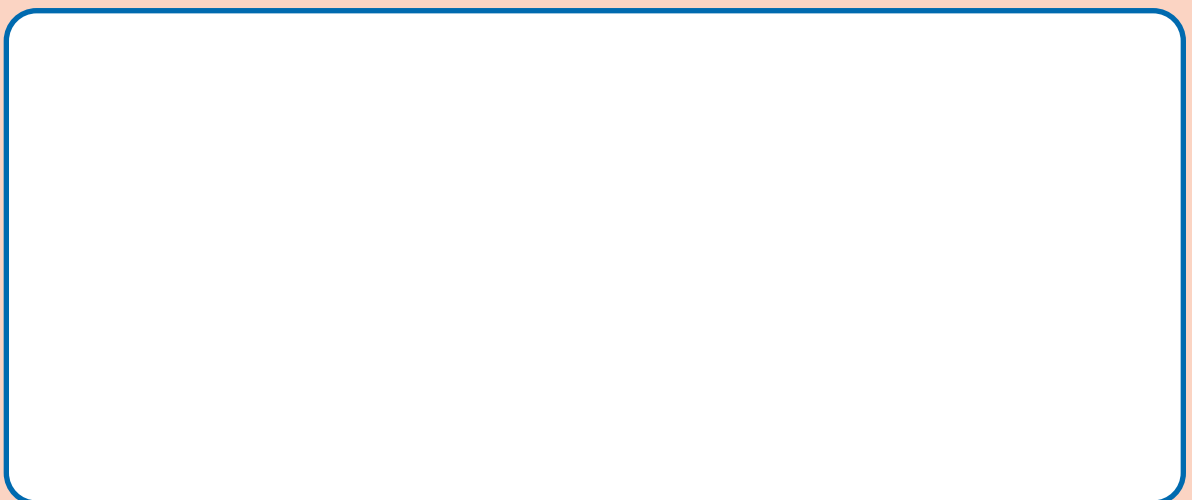
9

Aisha has some red and green grapes.

For every 4 green grapes, she has 7 red grapes.

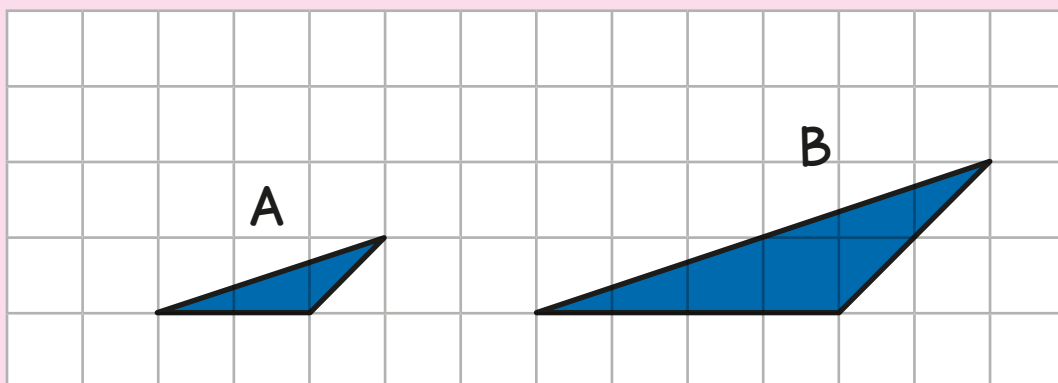
She has 20 green grapes.

How many more red grapes than green grapes does Aisha have?



- 10 Here are two triangles.

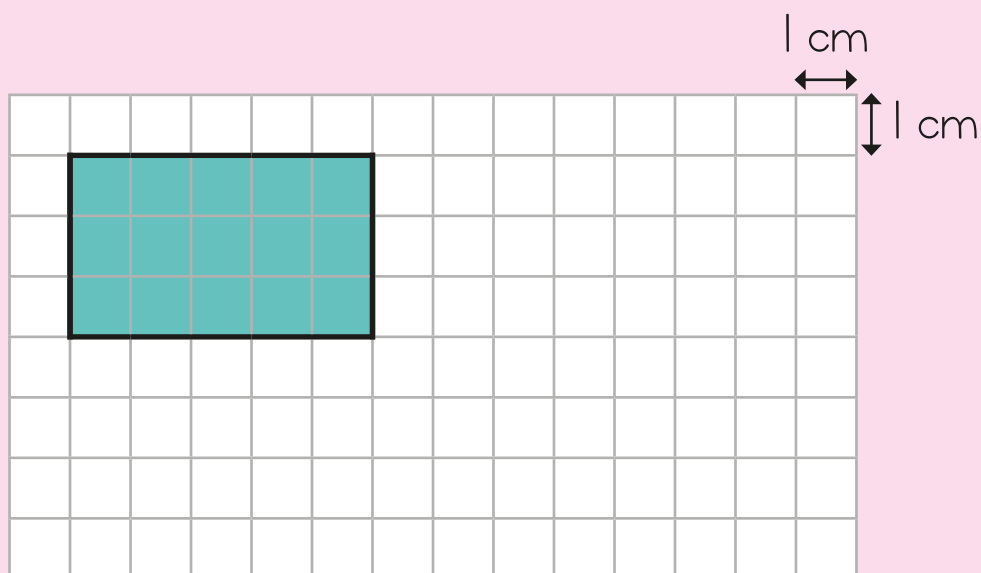
Triangle B is an enlargement of Triangle A.



What is the scale factor of enlargement?

- 11 A field is drawn to scale.

1 cm on the grid represents 6 metres in real life.



What is the length of the field?

 m

Another field is 12 m long and 9 m wide.

Draw this field on the grid.

Answers



- 1 For every 1 apple, there are **3** pears.
For every 3 oranges, there are **5** bananas.
- 2 For every 1 cone there are **2** spheres.
- 3 Yes, because Alex has 8 coins and Jack has 12, so for every 4 Alex has, Jack has 6
- 4 The ratio of circles to squares is **2 : 5**
The ratio of rectangles to triangles is **2 : 4**
The ratio of rectangles to triangles is **1 : 2**
- 5 **4 : 6** **2 : 3** **6 : 9**
- 6 $\frac{2}{5}$ 2 : 3
- 7 12 girls
- 8 54 blue cubes
- 9 15 more red grapes
- 10 2
- 11 30 m

