

5

CONVERTING UNITS

White
Rose
Maths



From White Rose Maths schemes for Year 5 Summer Term
BLOCK 4 - CONVERTING UNITS

1 Complete the conversions.

$$2 \text{ m} = \boxed{} \text{ cm}$$

$$4 \text{ litre} = \boxed{} \text{ millilitres}$$

$$6 \text{ cm} = \boxed{} \text{ mm}$$

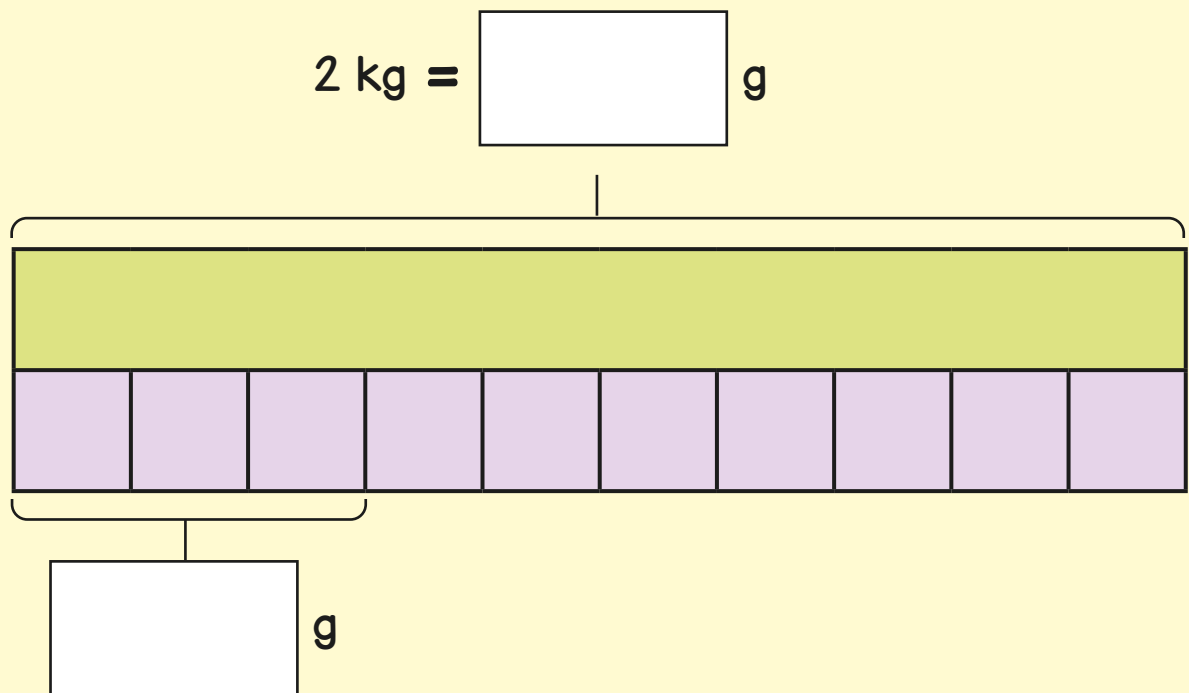
2 Today is Ben's 3rd birthday.

Ben's sister is 20 months younger than he is.

How old is Ben's sister?



- 3 Fill in the labels on the bar model.



- 4 Write $<$, $>$ or $=$ to compare the measurements.



0.7 litres \bigcirc 0.7 millilitres

0.32 kg \bigcirc 302 g

5

Eva, Whitney and Ron run a relay race.

The table shows their times.

 Eva	 Whitney	 Ron
2 minutes and 13 seconds	2 minutes and 3 seconds	$2\frac{1}{3}$ minutes

Write Ron's time in minutes and seconds.

How long do they take to complete the relay?

The winning team ran the race in 5 minutes and 58 seconds.

How much slower were Eva, Whitney and Ron?

6

$$1 \text{ inch} \approx 2.54 \text{ cm}$$

Use this to complete the conversions.

$$2 \text{ inches} = \boxed{} \text{ cm}$$

$$10 \text{ inches} = \boxed{} \text{ cm}$$

$$\boxed{} \text{ inches} = 12.7 \text{ cm}$$

7

Fill in the missing numbers.

$$7.9 \text{ km} = \boxed{} \text{ m}$$

$$6 \text{ litres} + \frac{1}{4} \text{ litre} = \boxed{} \text{ ml}$$

$$230 \text{ mm} + \boxed{} \text{ mm} = 62 \text{ cm}$$

$$250 \text{ g} + \boxed{} \text{ g} + 170 \text{ g} = 0.88 \text{ kg}$$

8

Mrs Singh is driving from London to Edinburgh.

The drive takes 7 hours and 45 minutes.



She wants to arrive in Edinburgh before 5 pm.

If she leaves at 9 am, will she arrive in Edinburgh on time?

Show all your workings.

9

Filip cuts a piece of ribbon.

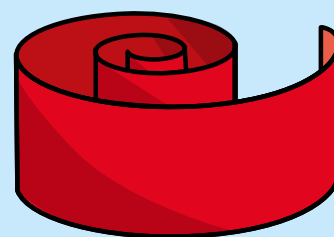
First he cuts a length of 45 cm.

Then he cuts a length of 1.18 m.

He now has 67 cm left.

How much ribbon did Filip have at the start?

Give your answer in metres.

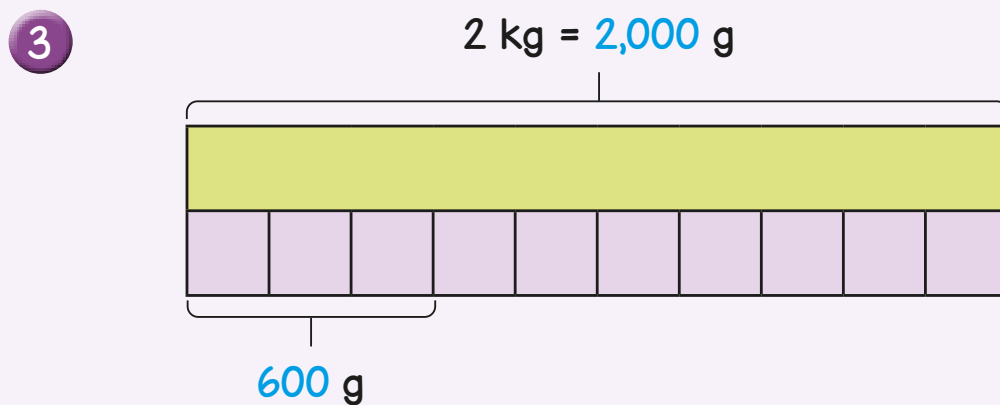


Answers



- 1 $2 \text{ m} = 200 \text{ cm}$
 $4 \text{ litre} = 4,000 \text{ millilitres}$
 $6 \text{ cm} = 60 \text{ mm}$

- 2 16 months old



- 4 $0.7 \text{ litres} > 0.7 \text{ millilitres}$
 $0.32 \text{ kg} > 302 \text{ g}$

- 5 2 minutes 20 seconds
6 minutes 36 seconds
38 seconds

- 6 $2 \text{ inches} = 5.08 \text{ cm}$
 $10 \text{ inches} = 25.4 \text{ cm}$
 $5 \text{ inches} = 12.7 \text{ cm}$

7 $7.9 \text{ km} = 7,900 \text{ m}$

$$6 \text{ litres} + \frac{1}{4} \text{ litre} = 6,250 \text{ ml}$$

$$230 \text{ mm} + 390 \text{ mm} = 62 \text{ cm}$$

$$250 \text{ g} + 460 \text{ g} + 170 \text{ g} = 0.88 \text{ kg}$$

8 Yes, she will arrive at 4.45 pm.

9 2.3 m