

4

# LENGTH AND PERIMETER

White  
Rose  
Maths



From White Rose Maths schemes for Year 4 Autumn Term  
BLOCK 3 - LENGTH AND PERIMETER

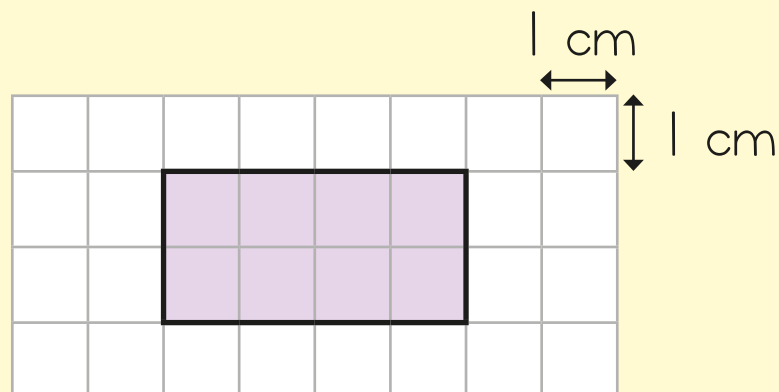
- 1 Complete the bar model.



- 2 Circle the lengths less than 600 m.

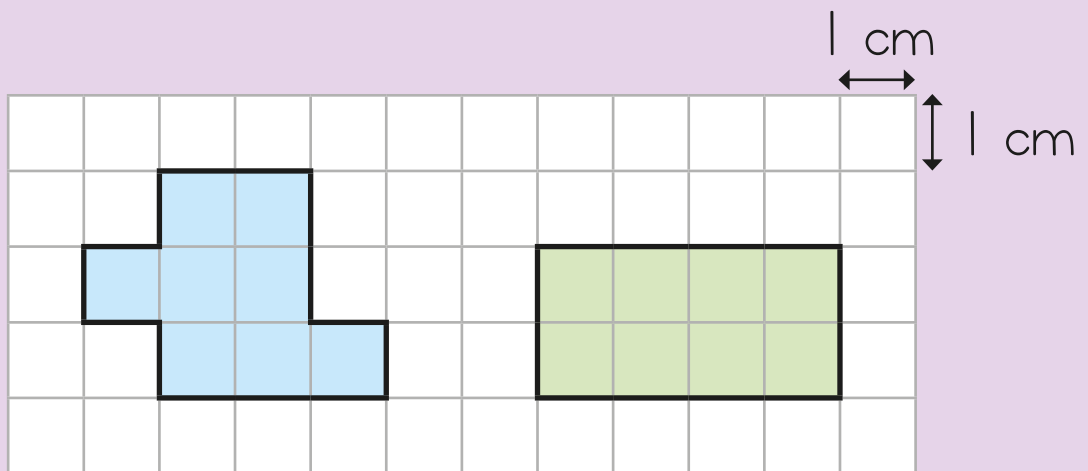
750 m                   $\frac{1}{2}$  km  
60 m                    6 km

- 3 What is the perimeter of the shaded rectangle?



- 4 What is 550 m less than 3 km?

5



Sam thinks the shapes have the same perimeter.

Do you agree?

Yes

No

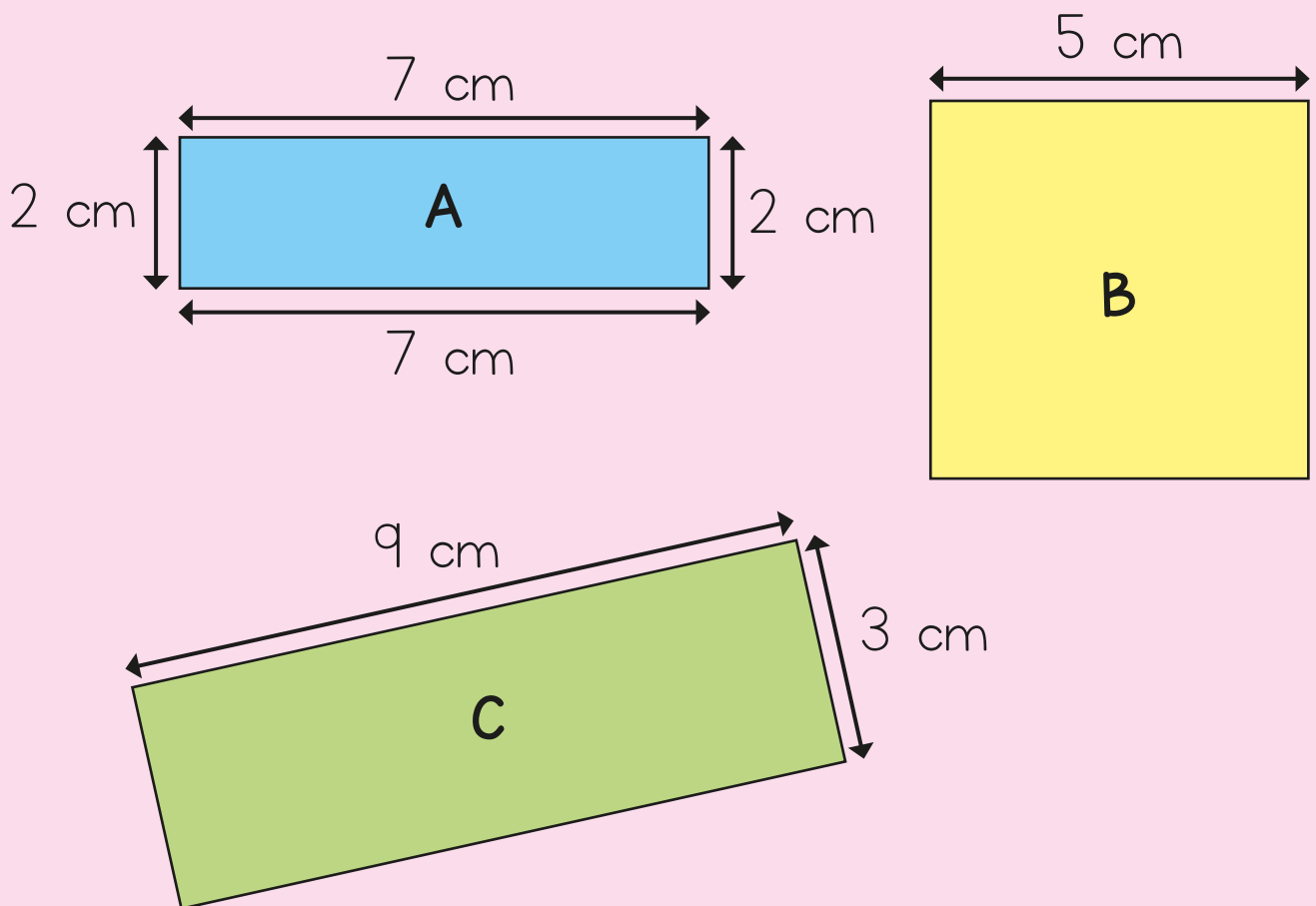
Explain why.

6 Here are 3 shapes.

Shape B is a square.

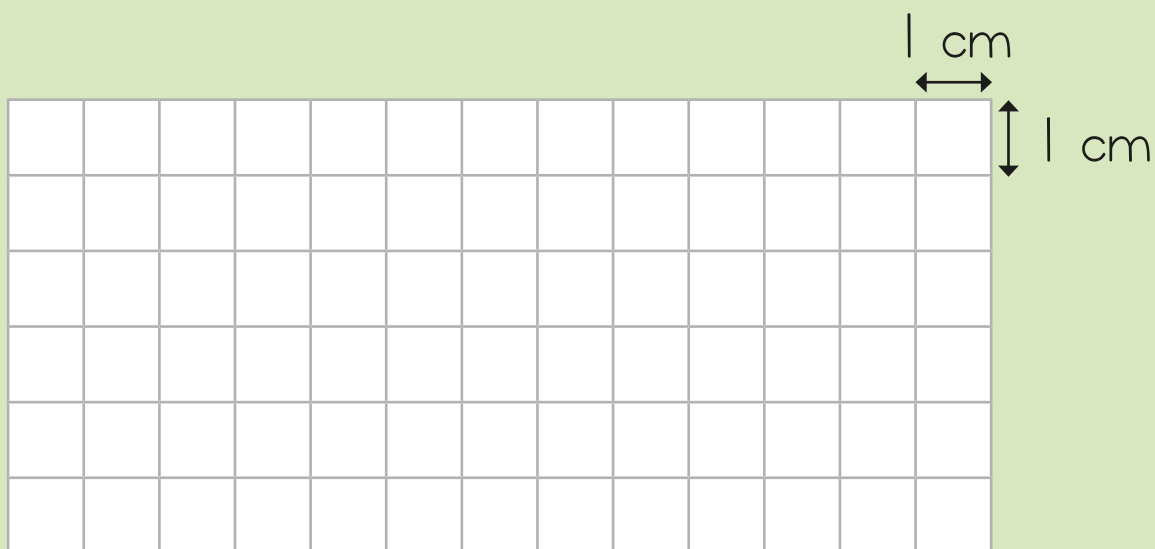
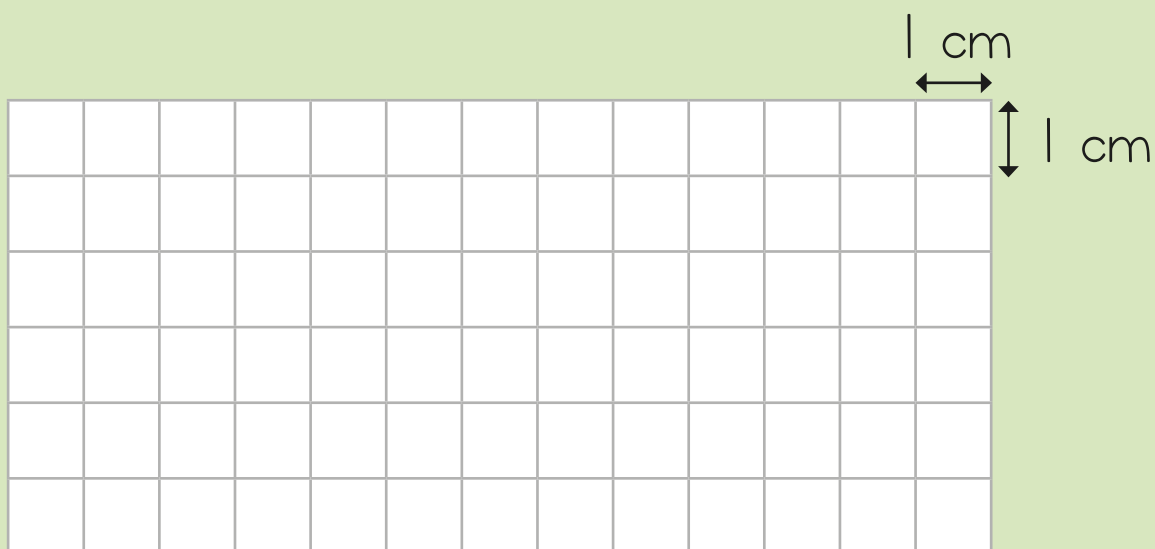
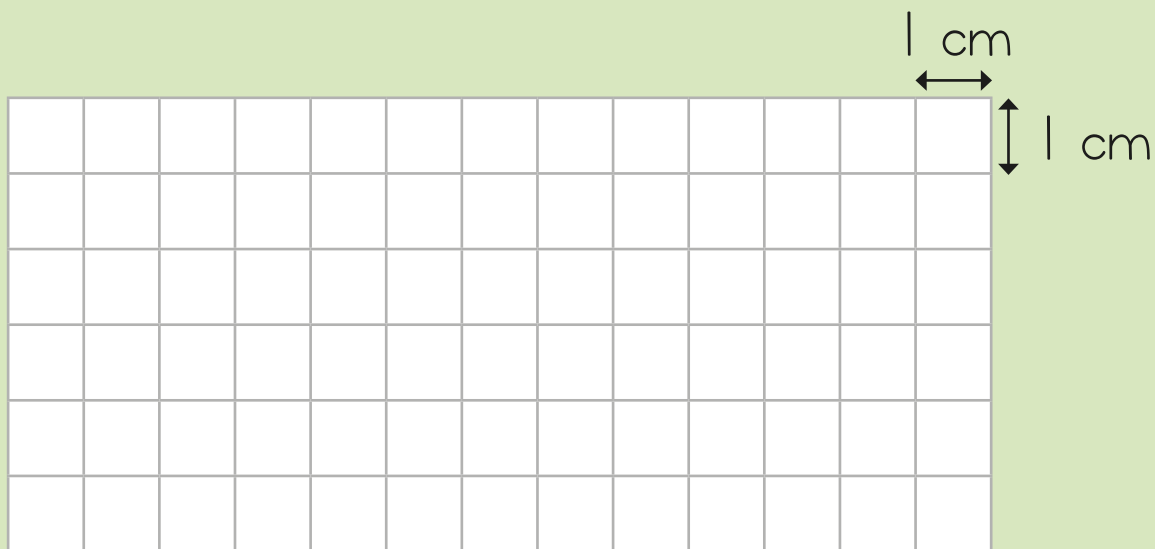
Put the shapes in order of their perimeter.

Start with the **greatest** perimeter.



A large empty rectangular box with a green border, intended for writing the order of shapes by perimeter.

- 7 Draw three different rectangles, each with a perimeter of 16 cm.

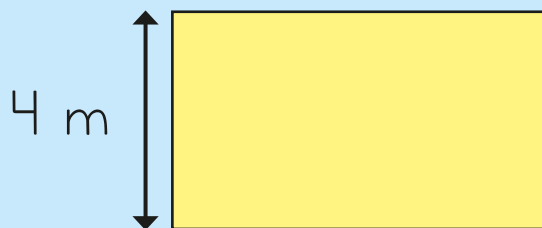


8 Here is a rectangle.

Each side is:

✿ a whole number

✿ less than 10 m



Circle the lengths that could be the perimeter of the shape.

19 m

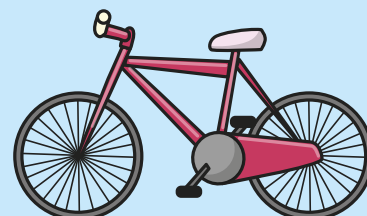
20 m

24 m

28 m

9 Kim cycles 5 km and 400 m.

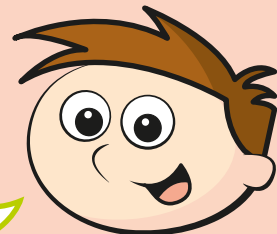
Jack cycles 3,500 m.



How much further does Kim cycle than Jack?

- 10 A rectangle has a perimeter of 24 cm.  
The length of the rectangle is 10 cm.

The opposite length  
is also 10 cm, so the width  
must be 4 because  
 $10 + 10 + 4 = 24$



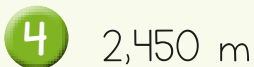
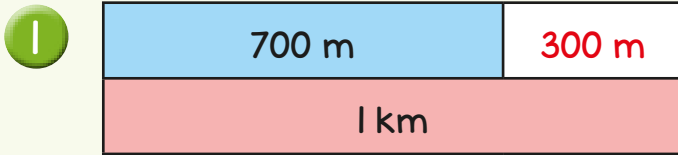
What mistake has Teddy made?

What is the correct width of the rectangle?

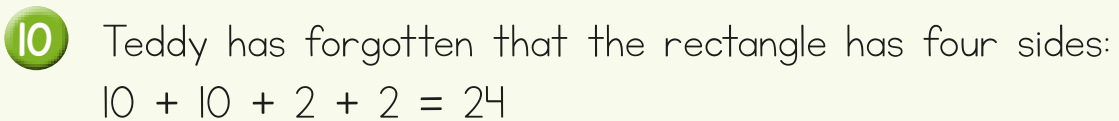
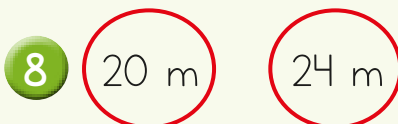
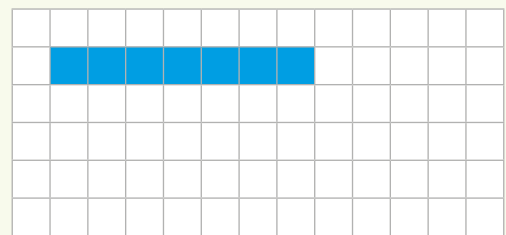
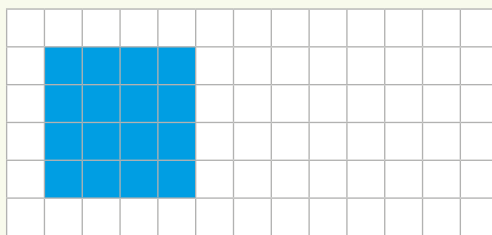
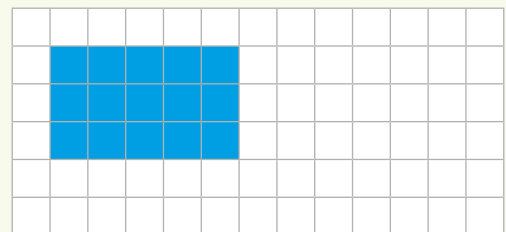
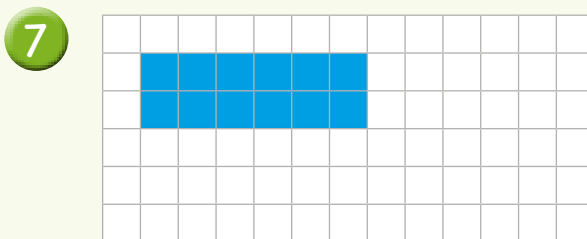
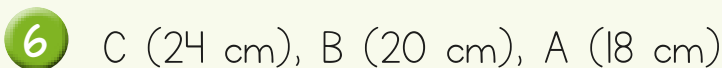


cm

# Answers



The blue shape has a greater perimeter.



The correct width of the rectangle is 2 cm.