

4

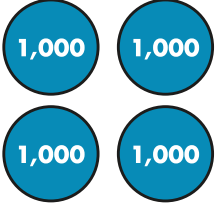

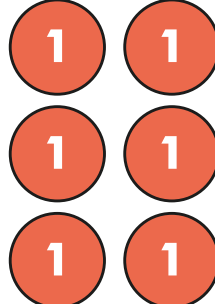
ADDITION AND SUBTRACTION

White
Rose
Maths



From White Rose Maths schemes for Year 4 Autumn Term
BLOCK 2 - ADDITION AND SUBTRACTION

1 Here is a number.

Thousands	Hundreds	Tens	Ones
			

- ✿ Subtract 4 ones
- ✿ Add 3 thousands
- ✿ Subtract 2 hundreds

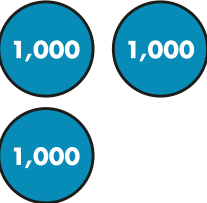

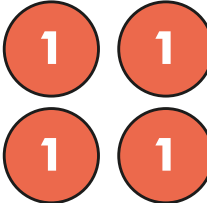

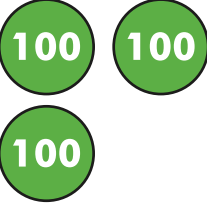
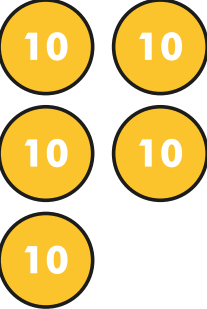

What is the new number?

2 Fill in the missing digits.

			3		6	
	+	1	2	4		
		8		9	6	

3 Calculate $3,204 + 2,352$

You can use the place value chart to help you.

Thousands	Hundreds	Tens	Ones
			
			

+

- 4 Calculate $649 - 278$

- 5 Arrange the digit cards to make a 4-digit number to complete the number sentence.

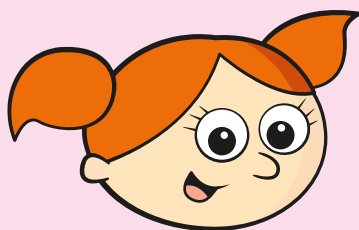
4

1

6

7

$$2,426 + 213 > \square\square\square\square$$



How many different ways can you arrange the digits to complete the sentence?

6 There are 5,677 people in a village.

1,952 are women, 2,803 are men and the rest are children.

Complete the bar model to represent this.



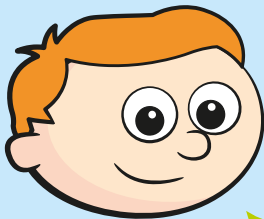
How many children are there?

7

Ron and Dora have £1 between them.

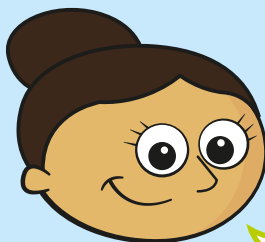
Ron has 26p more than Dora.

How much do they each have?



Ron

I have got



Dora

I have got

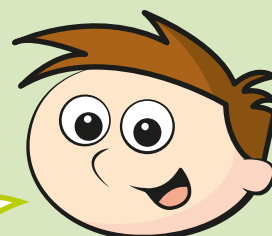
8 $813 + 496 = 496 +$

$619 + 224 = 620 +$

$2,379 + 4,412 = 3,379 +$

- 9 Teddy is asked to estimate the answer to $2,941 + 3,234$

I think the answer will be close to 5,000 because I have rounded the numbers and added 2,000 and 3,000



What is wrong with Teddy's estimate?

What would be a better estimate?

Answers



1 7,002

2

		7	3	5	6	
	+	1	2	4	0	
		8	5	9	6	

3 5,556

4 371

5 1,467 1,476 1,647 1,674 1,746 1,764

6

5,677		
1,952	2,803	922

There are 922 children.

7 Ron has 63p
Dora has 37p

8 $813 + 496 = 496 + 813$
 $619 + 224 = 620 + 223$
 $2,379 + 4,412 = 3,379 + 3,412$

9 Teddy hasn't rounded the numbers correctly because 2,941 is closer to 3,000 than 2,000, so we round it to 3,000
A better estimate would be an answer close to 6,000