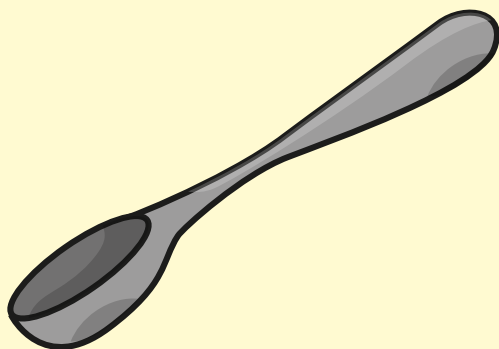


3

MEASUREMENT



- 1 Circle the most appropriate unit to measure the capacity of a teaspoon.



g

kg

ml

l

- 2 Circle the most appropriate unit to measure the weight of a cookie.



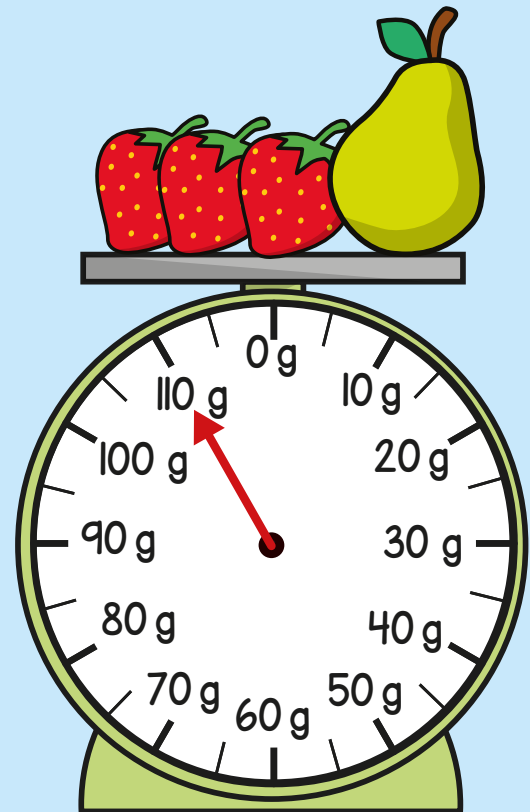
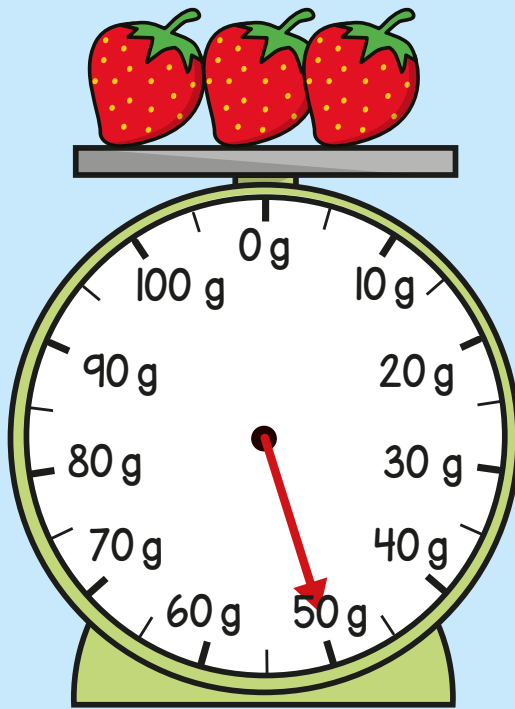
g

kg

ml

l

3



What is the mass of the strawberries?

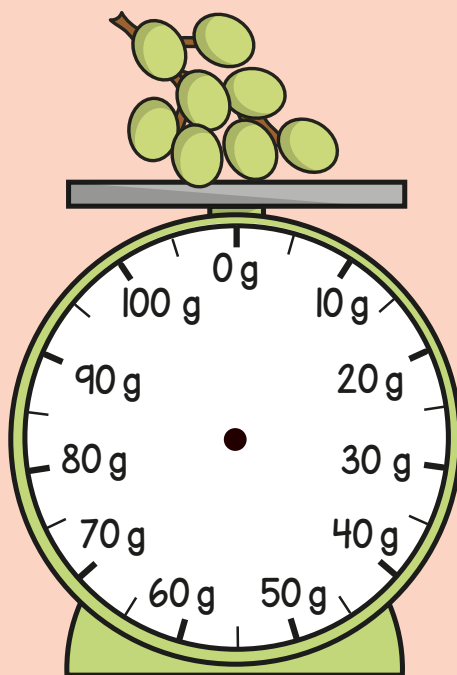
 g

What is the mass of the pear?

 g

- 4 The bunch of grapes has a mass of 75 g.

Draw an arrow on the scale to show the mass of the grapes.



- 5 Write $<$, $>$ or $=$ to make the statements correct.

$$500 \text{ g} \quad \bigcirc \quad 5 \text{ kg}$$

$$500 \text{ g} + 200 \text{ g} \quad \bigcirc \quad 450 \text{ g} + 250 \text{ g}$$

$$2 \text{ litres } 100 \text{ ml} \quad \bigcirc \quad 1 \text{ litre } 850 \text{ ml}$$

6 Kim has a bottle of water.

She pours some water into the jug.

She has 1 litre 350 ml of water left in the bottle.



How much water was in the bottle at the start?



$$\text{Two donuts} = 100 \text{ g}$$

Use this information to complete the sentences.

$$\text{Four cookies} = \boxed{} \text{ g}$$

$$\text{One cookie} = \boxed{} \text{ g}$$

$$\boxed{} \text{ donuts} = 1 \text{ kg}$$

8 Filip has a 1 litre bottle of juice.

He pours 3 glasses of juice.

There is 225 ml in each glass.

How much juice is left in the bottle?

 ml

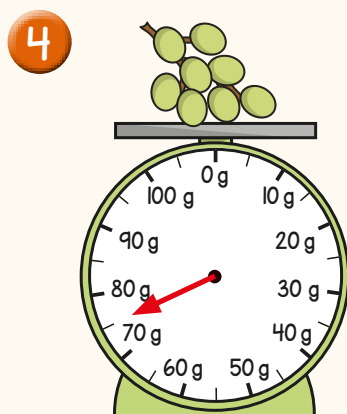
Answers



1 ml

2 g


3 50 g
60 g



5 $500 \text{ g} < 5 \text{ kg}$
 $500 \text{ g} + 200 \text{ g} = 450 \text{ g} + 250 \text{ g}$
 $2 \text{ litres } 100 \text{ ml} > 1 \text{ litre } 850 \text{ ml}$

6 1 litre 750 ml

7  = 100 g

 = 25 g

20  = 1 kg

8 325 ml