

3

TIME

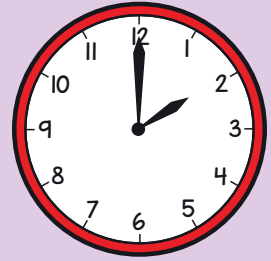
White
Rose
Maths



From White Rose Maths schemes for Year 3 Summer Term

BLOCK 2 - TIME

1 Here is a clock.



Use the words to complete the sentences.

short

long

The _____ hand is the minute hand.

The _____ hand is the hour hand.

2 Complete the sentences.

There are minutes in an hour.

There are minutes in three-quarters of an hour.

There are minutes in an hour and a half.

3 Match the clocks to the times.



20 past 9



half past 12



half past 1



quarter to 4

4 Order the times from shortest to longest.

A

1 hour
20 minutes

B

one and a
quarter hours

C

90 minutes

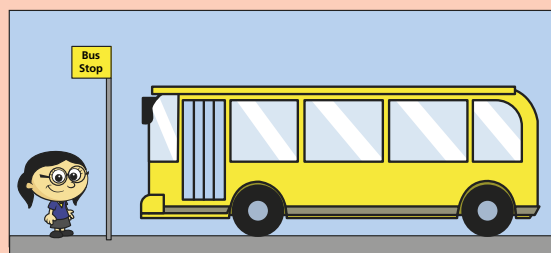
shortest

longest



5 Annie leaves her house at 5 minutes to 8

She walks 20 minutes
to the bus stop.



What time does she arrive at the bus stop?

Write your answer in words.

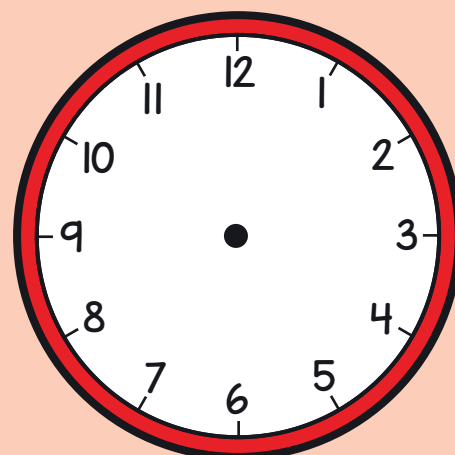
Brett is walking from his house to school.

✿ The walk is 25 minutes long.

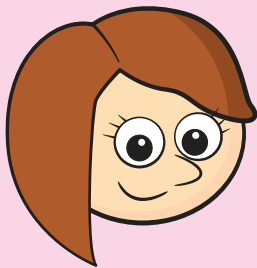
✿ He arrives at 10 minutes to 9

What time does he leave
the house?

Draw the time on
the clock.



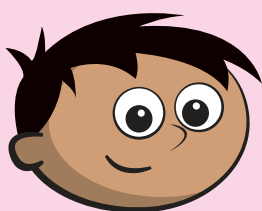
6 Circle am or pm for each statement.



It is time to go
home from school.

am

pm



It is time to get
up and get ready
for school.

am

pm

7 There are 24 hours in a day.
How many hours are there in a weekend?

How many days is 72 hours?

Answers



- 1 The **long** hand is the minute hand.
The **short** hand is the hour hand.
- 2 There are **60** minutes in an hour.
There are **45** minutes in three-quarters of an hour.
There are **90** minutes in an hour and a half.

3

A matching exercise with four analog clocks on the left and four text boxes on the right. Red arrows connect each clock to its corresponding time.

- Top clock: The short hand is on 9 and the long hand is on 12. This is connected to the box "20 past 9".
- Second clock: The short hand is between 9 and 10, and the long hand is on 4. This is connected to the box "half past 12".
- Third clock: The short hand is between 12 and 1, and the long hand is on 9. This is connected to the box "half past 1".
- Bottom clock: The short hand is on 12 and the long hand is on 3. This is connected to the box "quarter to 4".

4 B A C

5 Quarter past 8 or 15 minutes past 8



6 pm

am

7 48 hours
3 days