

# 2

## MEASUREMENT

White  
Rose  
Maths



From White Rose Maths schemes for Year 2 Summer Term  
**BLOCK 3 - MEASUREMENT**

1 Complete the sentences.

Use the word bank to help you.

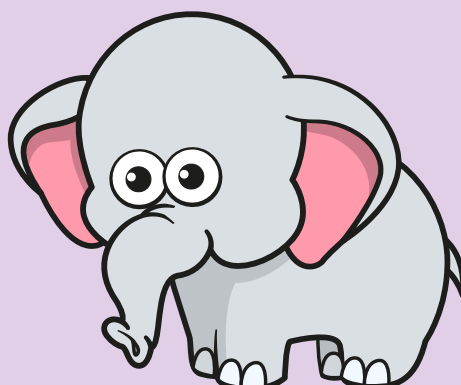
banana

pear



The \_\_\_\_\_ is heavier.

The \_\_\_\_\_ is lighter.



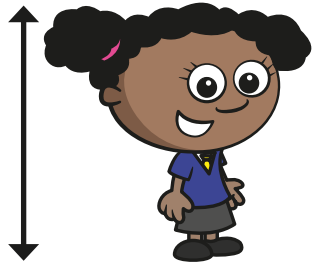
2

Match each image to the best unit of measure.



capacity of a bottle

kilograms



height of Whitney

millilitres



mass of a pineapple

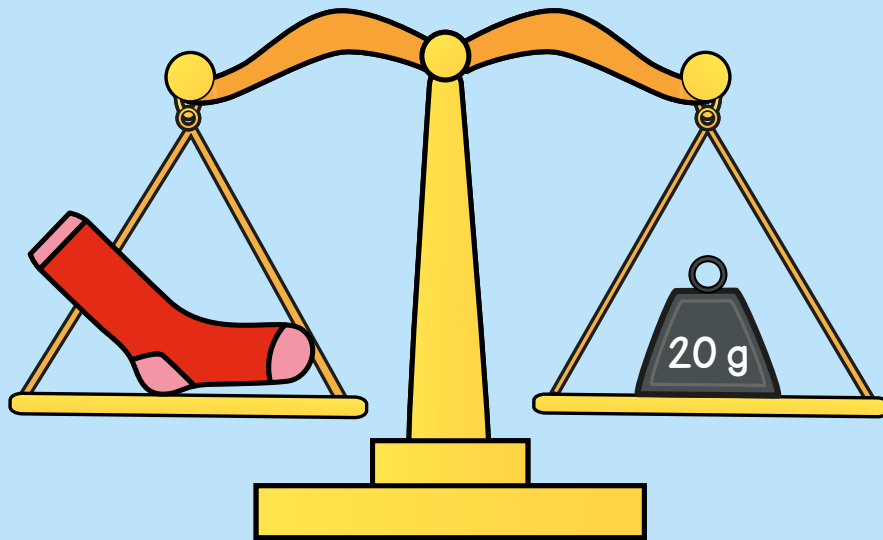
centimetres



mass of a dog

grams

- 3 One sock weighs 20 g.

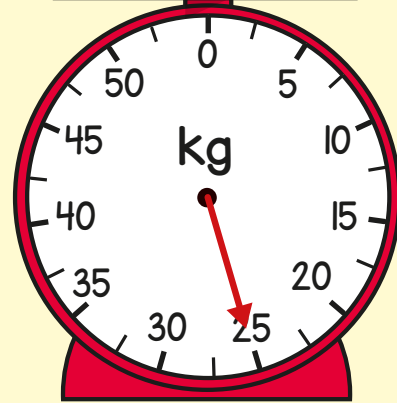
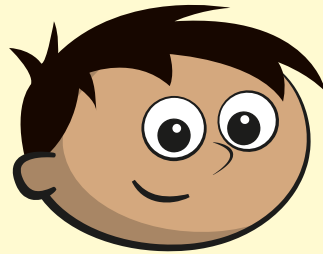


How much would a pair of socks weigh?

 g

How many socks would weigh 100 g?

4 Complete the sentence.



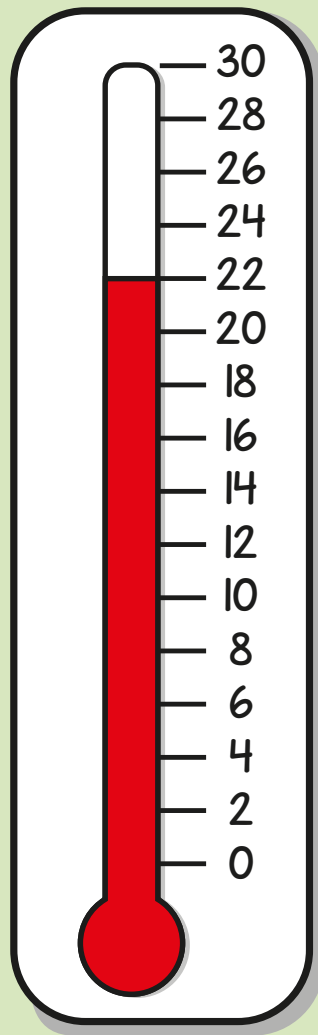
Amir's suitcase weighs  kg.

Amir takes some items out of his suitcase.

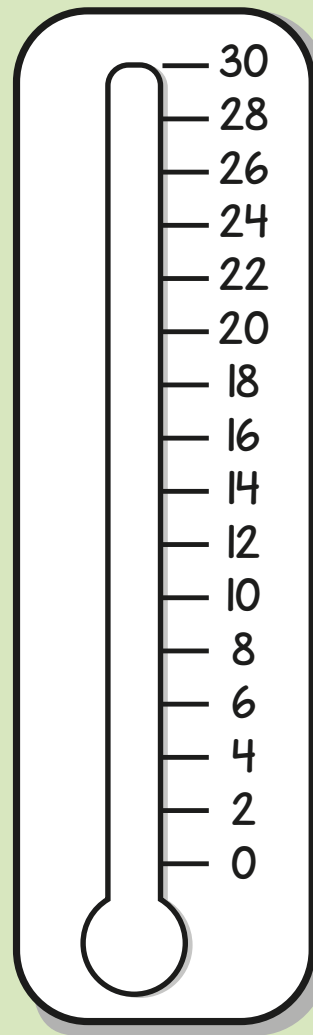
The suitcase now weighs 12 kg.

What is the mass of the items Amir takes out?

5



yesterday



today

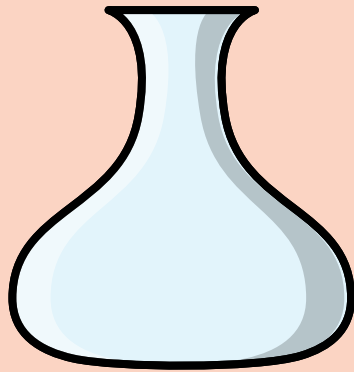
What was the temperature yesterday?

°C

Today, the temperature is 8 degrees cooler than it was yesterday.

Shade the thermometer to show this.

- 6 A flask has a capacity of 80 ml.  
A cup has a capacity of 5 ml.



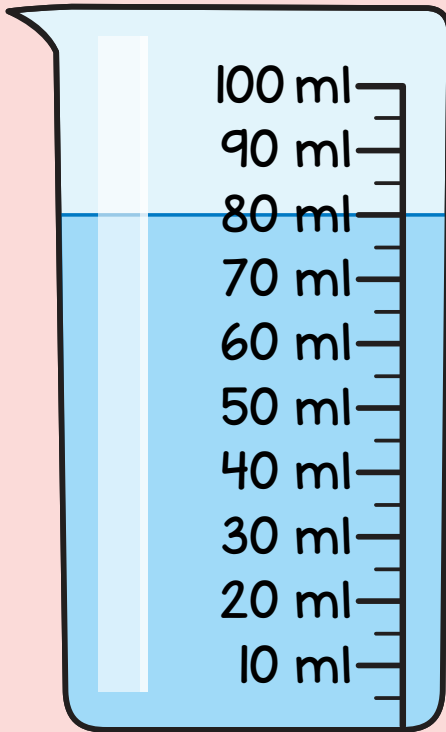
80 ml



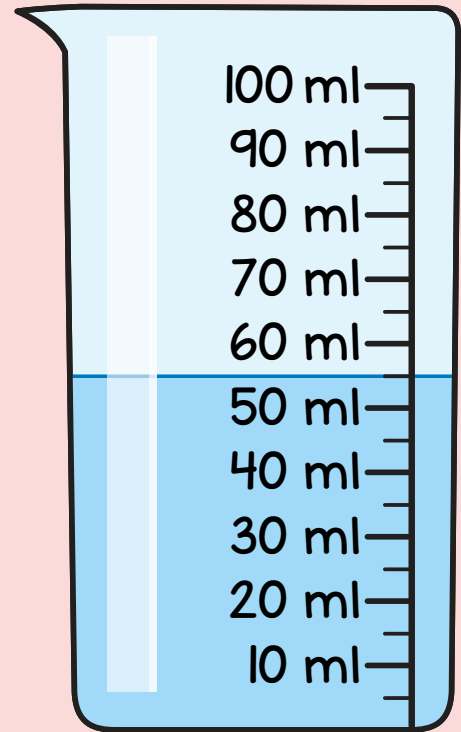
5 ml

Jack uses the cup to fill the flask.  
How many cups does Jack use?

7 How much water is in each container?



ml



ml


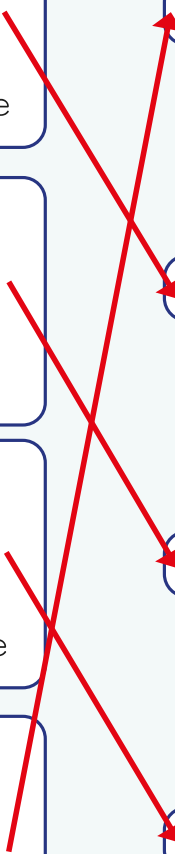
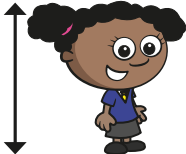




# Answers

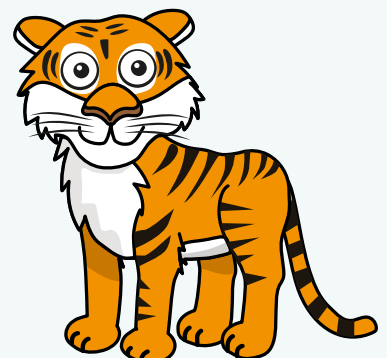


- 1 The **pear** is heavier.  
The **banana** is lighter.

2

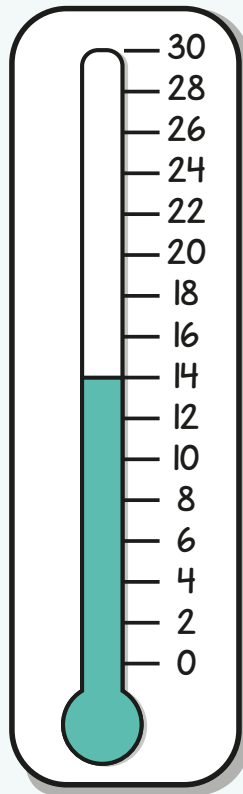
 capacity of a bottle		kilograms
 height of Whitney		millilitres
 mass of a pineapple		centimetres
 mass of a dog		grams

- 3 40 g  
5 socks



4 13 kg

5 22°C



6 16 cups

7 80 ml      55 ml

